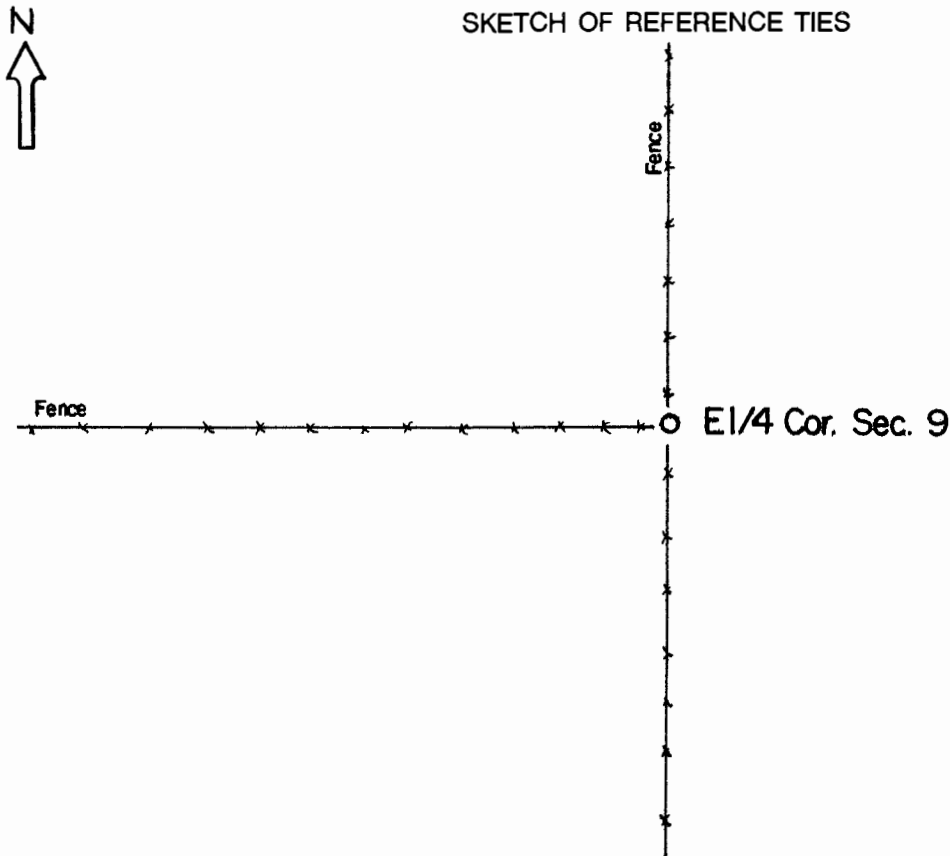


CERTIFICATE OF LOCATION OF GOVERNMENT CORNER

East Quarter Corner of Section **9** , Township **108** , Range **41** 5th P.M.
STATE OF MINNESOTA, County of Murray.

Statement: Sept. 29, 1989 - Found an axleshaft 2.5 feet below the surface.
Placed a Mn/DOT Cast Iron Monument.



Statement of evidence relative to this corner location is on the back of page.

I hereby certify that this document and the data contained herein was prepared by me or under my direct supervision and that I am a duly Registered Land Surveyor under the laws of the State of Minnesota.

 Nov 6, 1989
Duane A. Bonnema Date

Minnesota Registration No. 14895

OFFICE OF THE COUNTY RECORDER
COUNTY OF MURRAY **NOV 15 1989**

I hereby certify that this document was filed in the County Recorder's office at ___M. on the ___ day of _____ A.D., 19__

County Recorder James V. Johnson

By _____, Deputy
DOCUMENT NO. _____

East Quarter Cor. Sec. 9 T108N-R41W

Statement:

September 1861 Original Government Land Office Surveyor L. G. M. Fletcher records in his field notes, "set quarter section post, built mound with trench pits, charred stake."

Sept. 29, 1989 Duane A. Bonnema, LS 14895, found a 1/2" inch dia. axle-shaft alongside with traces of wood 2 1/2 feet below the surface of the ground. Placed a Minnesota Department of Transportation Cast Iron Monument at the Corner position.